

## Linkage Kit for VR-G Screwed Rotary Shoe Valves



### Features

- Low cost linkage
- Easy to install

### Product Codes

#### VR-G-LK

Linkage kit to enable VA-D actuators to be used on the VR-G screwed rotary shoe valves

### Installation

1. Rotate the valve shoe to close the required port the shoe position is indicated by the machined point (fig. 1) of the 3 points of the end of the valve stem.

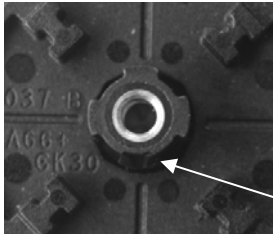


Fig. 1

2. If fitted, remove the knob and leave the plastic snap ring on the valve body.



3. Place the mounting plate into the four protruding points.



4. Fit the Teflon washer over the valve stem.



5. Fit the valve stem extender onto the valve, paying attention to the position of the stem shaft. The 1/2 flat, which indicates the closed side of the valve body (fig. 2) goes on the side of the machined point (fig. 1) of the 3 points of the end of the valve stem.

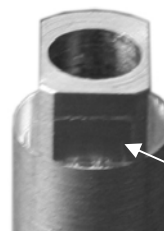
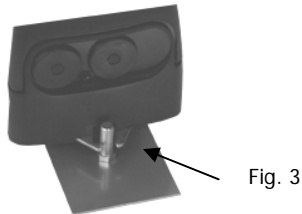


Fig. 2



### Installation (continued)

6. Place the actuator onto the linkage, ensuring that the anti-rotation pin is secured (fig. 3).



7. Tighten the screw with the lock washer, by holding the flats of the stem extender to prevent it from spinning (ensure that you have the lock washer over the screw). Rotating friction is limited by the Teflon disc and heights of the stem extender and the mounting screw.

